



## USING THE AIR ANTENNA MOUNT


For AAT and AAT Mini Models


Sunsight Instruments  
4380 St Johns Pkwy  
STE 120  
Sanford FL 32771 USA  
+1 321.244.9443 x2  
[www.sunsight.com](http://www.sunsight.com)  
[support@sunsight.com](mailto:support@sunsight.com)

Issue 1 05/25/2024


## Safety


The AAT should be handled using the following considerations:


 There are no user-serviceable parts within the AAT. All internal repairs must be performed by Sunsight Instruments.

 Use only the Sunsight supplied smart charger to recharge the LiFePO4 battery pack. Use of a non-approved battery charger will void the battery warranty and can damage the battery pack.

 Never attempt to recharge the batteries outdoors in inclement conditions.

 Never short the battery terminals, attempt to disassemble the battery pack, or dispose of the pack in a fire. Any exhausted battery packs must be disposed of properly. CONTACT SUNSIGHT INSTRUMENTS IF YOU ARE UNSURE OF HOW TO PROPERLY DISPOSE OF THE BATTERY.

 The AAT is water resistant, but not waterproof. Do not submerge or leave the unit in standing water. All sealing caps and doors must be secured while in use, particularly during inclement weather.

 Avoid impacting, dropping or rough handling of the AAT. The AAT contains sensitive electronic components. Rough handling may result in internal component damage.

 Care should be taken to avoid impact to the black GPS antennas on the top of the AAT.

**If you suspect the AAT is operating incorrectly, contact Sunsight Instruments or an authorized Sunsight Instruments distributor for support.**

[www.sunsight.com](http://www.sunsight.com)    [support@sunsight.com](mailto:support@sunsight.com) +1 321-244-9443

This document will cover the correct usage of the Air Antenna Mount for the AAT and AAT Mini alignment products.

Before attempting to use the Air Antenna Mount or any accessories, please review all training materials and familiarize yourself with the:

[AAT/AAT Mini/AAT Max Quick Start Guide.](#)

This document assumes that the user has read and understands all AAT training and safety materials.

**For the remainder of this documents, the term "AAT" will mean both the AAT and AAT Mini alignment systems.**

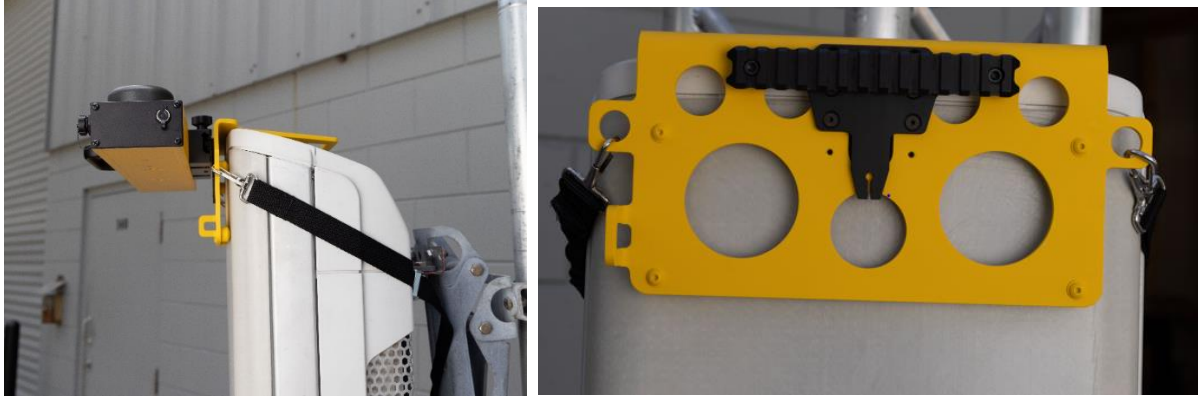
This document assumes that the AAT and Air Antenna Mount have been prepared and maintained.

## Overview

The Air Antenna mount is required for use on Ericsson Air11, Air21, and Air32 Antennas. It is suitable for measuring correct azimuth, tilt (aka elevation), and roll (plumb).



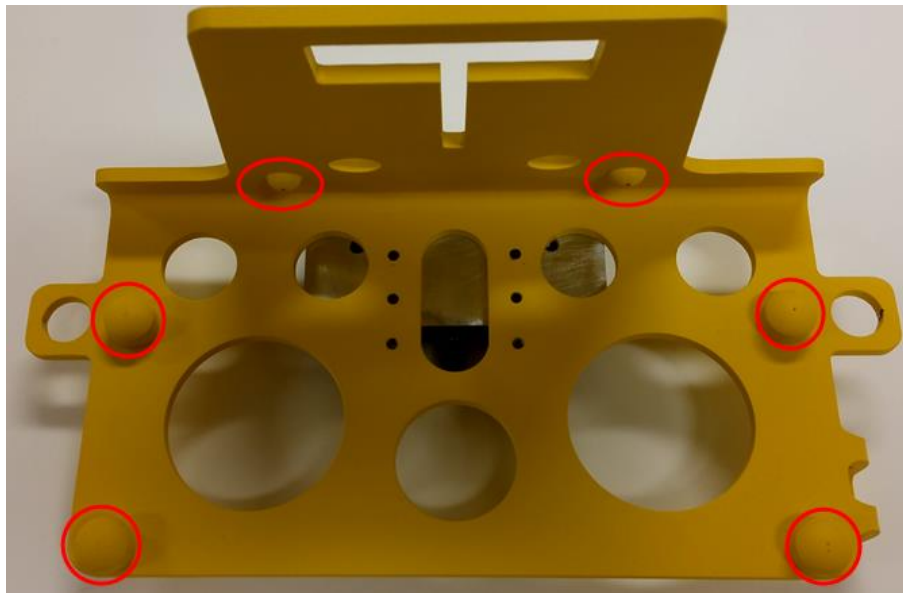
***Air Antenna Mount***



### **Air Antenna Mount on Antenna (with and without AAT)**

#### **1. Secure the mount to the AIR antenna**

- 1) Position the mount so that the vertical (AIR 11, AIR 21) or horizontal (AIR 32) slot slides over the antenna lifting bracket on top of the AIR antenna.
- 2) Ensure front bumpers (x4) make contact with the face of the antenna and top bumpers (x2) are in contact with the top of the antenna.



### **Air Antenna Mount Bumpers**

- 3) Clip the supplied AIR mount retaining strap to one ear of the mount, then route the strap behind the antenna and beneath the upper antenna mounting bracket (photo below), then clip the loose end of the strap to the opposite ear on the mount.

- 4) Adjust strap tension so that the mount sits securely on the antenna and all bumpers are in contact with the antenna.



***Route Strap Behind antenna and beneath upper antenna mount bracket***

## **2. Secure the AAT to the Air Antenna mount**

- 1) Attach the AAT to the AIR Mount mounting rail using the grip plate on the back of the AAT. User should feel AAT “click” into position. Tighten AAT thumbscrews to secure AAT.
- 2) Secure AAT and Air Mount to stable structure using safety lanyard to prevent potential falling hazard.

## **3. Measuring, Capturing and Reporting Alignment Data**

- 1) Connect to the AAT in the standard way by powering on the AAT and connecting using WiFi or USB-C cable (see Quick Start Guide for detailed instructions). The WiFi connection can be made using the Android App (preferred) or by using WiFi and a browser.
- 2) On the AAT Measure Only page, set Orientation to “**Faces Front**” and click Apply.
- 3) Perform antenna adjustments to match desired alignment and save results.